



Vermont.gov

CAMPING HIKING BIKING SWIMMING BOATING FISHING PICNICS NATURE QUIET TIME OTHER ACTIVITIES

FOR FAMILIES

FOR WEDDINGS

FOR PEOPLE WITH PETS

FOR GROUPS

FOR RV USERS

Home

Find a State Park

Reservations

Cabins & Cottages
Picnic Pavilions
Seyon Lodge

Fees
General Info
Park Passes

Venture Vermont
Outdoor Challenge

Events
News
Photos & Video
Publications

Employment
Volunteering
Internships

About Us
Contact Us

Site Map



Sweet Pond State Park

Located in Guilford



Directions:

From Interstate 91 take Exit 1, travel south on U.S. Route 5. In the village of Algiers, turn right after 1.3 miles onto Guilford Center Road. Travel .4 miles and turn left onto Weatherhead Hollow Road. Travel 4.6 miles and turn right onto Sweet Pond Road. The trailhead entrance is a sharp right hand turn at 2 miles; immediately turn left after the park sign - the parking lot is down the hill.

N 42.76° W 72.62° [Directions/Map](#)

About the Park:

Sweet Pond State Park was established in 1976. The park is named after Dr. Charles and Susan Sweet, who maintained a summer home on the property for a time prior to State acquisition.

Located in the southeastern Vermont town of Guilford, the park is less than one-half mile from the Massachusetts border, and is nine miles southwest of Brattleboro. The park includes all of the shoreline of 18-acre Sweet Pond. The pond is an artificial impoundment on Keats Brook; a dam was first established here in the mid 19th century to power a mill. The land was originally settled by the Franklin family, who farmed the land for more than 150 years beginning in 1777. The Franklin Cemetery lies within the park.

The park is undeveloped, except for the Sweet family home (privately rented), a public parking area and a foot trail. There are traces visible of historic farmsteads and roads on the property. The 1.3 miles Sweet Pond Trail circumnavigates the pond. It is a popular place for the easy hike and for paddling and swimming (though not currently as the pond has been drained).

The Department of Forests, Parks and Recreation has decided to move toward rehabilitating the dam following the concept of Alternative #2 of the report from Dubois and King. The eventual result

Sweet Pond State Park

2763 Sweet Pond Rd
Guilford, VT 05301

This undeveloped park is open for day visits. There are no staff present and there are no developed facilities. Camping is not permitted. For information, please contact Vermont State Parks at the Springfield Regional Office, (802)885-8855.

Sweet Pond is currently drained; water based recreation is not available at this time.

Parking

There is a trailhead parking area that can accommodate approximately ten vehicles.

Parking is also available at a pull-off on the road shoulder by the dam and at the car-top boat launching area; two vehicles can fit at each location.

Sweet Pond Dam Analysis Documents:

- [Main Report \(pdf\)](#)
- [Figures \(pdf\)](#)
- [Appendix A \(pdf\)](#)
- [Appendix B \(pdf\)](#)
- [Appendix C \(pdf\)](#)
- [Appendix D \(pdf\)](#)
- [Appendix E \(pdf\)](#)

[Sweet Pond Map & Guide](#)

[Weather Forecast for Sweet Pond State Park](#)

Fast Park Finder

Search



Make Camping Reservations



Check out our Photographer Galleries

Sign up for our Email Newsletter

GO

Vermont's Top 5



- Hiking
- Biking
- Family Camping
- Paddling
- Views
- Remote Camping

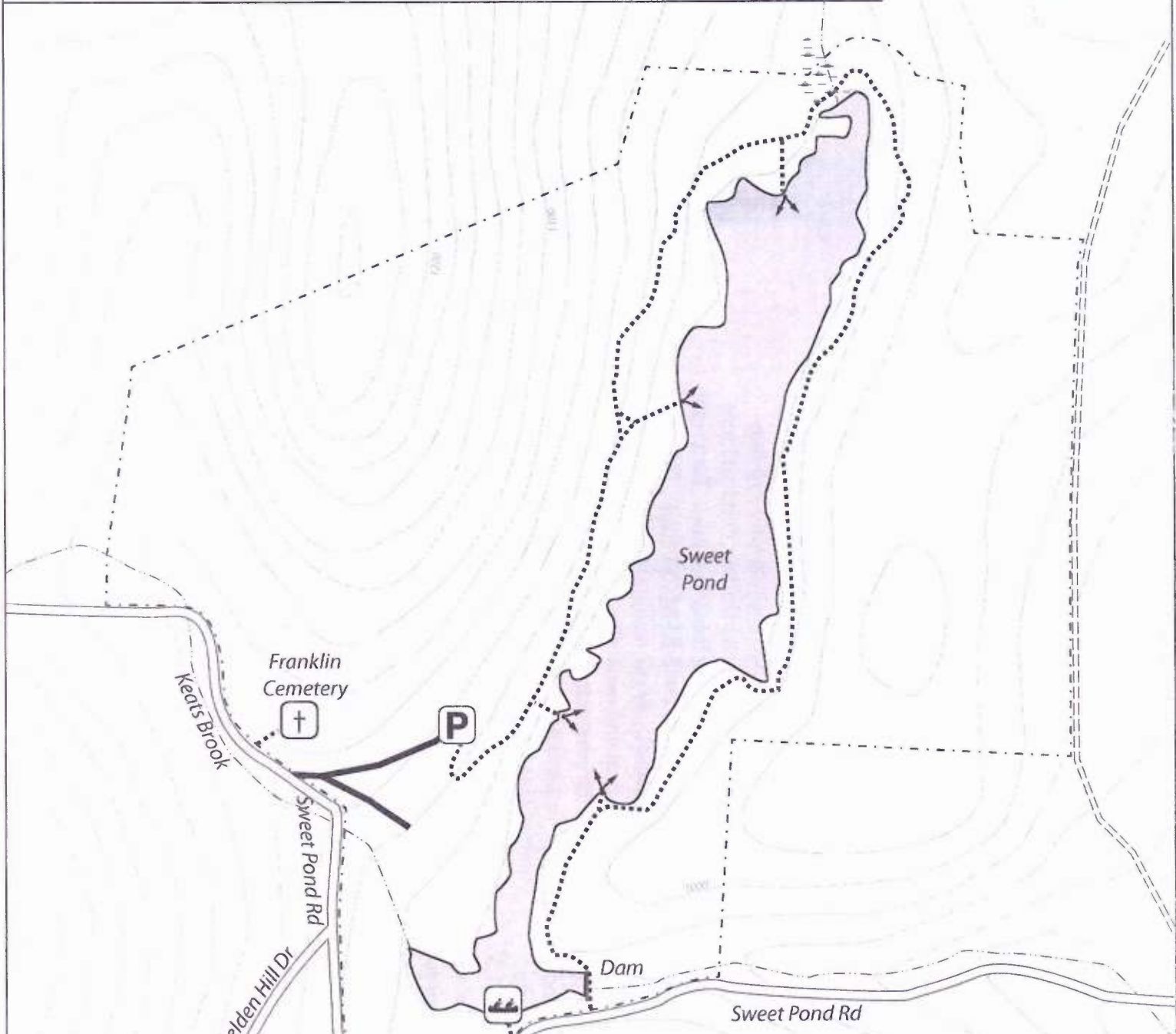
will be a pond the approximate size and configuration of the previous pond and a dam that is structurally sound but retains much of the important historic and aesthetic characteristics of the original structure. Initial planning will begin during the state fiscal year that begins July 1, 2012. Capital funding for final design and construction will be requested for Fiscal Year 2014 which if approved would allow for construction beginning in the fall of 2013. There are many variables that can affect the outcome not the least of which is competition for limited capital construction funds among all the other critical priority needs of the state.

Camping is available in season at nearby Fort Dummer State Park (10.6 miles) or Molly Stark State Park (25.5 miles).

[Accessibility](#) | [Privacy](#) | [Security](#) | [Contact Webmaster](#)
A Vermont Government Website | Copyright 2009 State of Vermont

Sweet Pond State Park

Guilford, Vermont



This map is intended for informational purposes only. Not survey accurate.

Legend

- Parking (not maintained in winter)
- Cartop Boat Launch
- Foot trail
- Vista
- Gravel surfaced town highway
- Town trail
- State forest highway
- State Park boundary

Welcome to Sweet Pond State Park

Sweet Pond State Park was established in 1976 when the State of Vermont purchased a 100-acre tract of land with funds from the federal Land and Water Conservation Fund. The park is named after Dr. Charles and Susan Sweet, who maintained a summer home on the property for much of the 20th century.

Located in the southeastern Vermont town of Guilford, the park is less than 1 ½ miles from the Massachusetts border, and is nine miles southwest of Brattleboro. The park includes all of the shoreline of 20-acre Sweet Pond. The pond is an artificial impoundment on Keats Brook; a dam was first established here in the mid 19th century to power a mill. The land was originally settled by the Franklin family, who farmed the land for more than 150 years beginning in 1777. The Franklin Cemetery lies within the park.

The park is undeveloped, except for the Sweet family homestead, a public parking area and a foot trail. There are traces visible of historic farmsteads and roads on the property. The 1.3 mile Sweet Pond Trail circumnavigates the pond. The park is managed for dispersed recreation, wildlife habitat and timber production. The park is open for day activities; camping or overnight use is not permitted. Hiking and paddling are the most common activities here.

Sweet Pond Trail

1.3 miles, loop, Easy.

The Sweet Pond Trail begins at the parking area off of Sweet Pond Road. The trail cuts down the hillside, and swings to the left, or north, after a few yards, following an old road. It continues along the western shore of the pond; there are three short side trails that lead to vistas of the

pond. At the northern end of the pond, the trail crosses through a brushy wetland on several elevated timber boardwalks. The trail continues to the southeast, along the eastern side of the pond through mature hemlocks and oaks. There is another vista near the southern end. At one mile, the trail crosses over the concrete and stone dam and connects to Sweet Pond Road. Follow the road back to the park entrance and parking area.

Getting to Sweet Pond State Park

From Brattleboro, head south on U.S. Route 5, and turn right onto the Guilford Center Road. Turn left (1.7 miles from Rt 5) onto Weatherhead Hollow Road. Continue past the Guilford fairgrounds and Weatherhead Hollow Pond and turn right onto Baker Cross Road (5.6 mi.). Turn right again onto Sweet Pond Road (6.1 mi.). The road is rather narrow, so use caution and drive slowly. Pass the dam and outlet (7.4 mi.) and take a sharp right at the park entrance (there's a sign; 7.7 mi.). Immediately turn left and go down a short, narrow lane to the parking area and information kiosk.

For more information, contact the Department of Forests, Parks & Recreation at 100 Mineral St, Ste 304, Springfield, VT 05156; (802) 885-8855 or www.vtstateparks.com

This publication is available in Braille, large print and audio format. VT TDD Relay (800) 253-0191

Printed on recycled paper
01/2011-ERP

Sweet Pond State Park Map & Guide



*Hiking
Paddling*

www.vtstateparks.com

 VERMONT
AGENCY OF NATURAL RESOURCES
Department of Forests, Parks and Recreation